



About BioVentures, Inc.

Throughout human history the great explorers have turned their attentions toward the universe around us, the world beneath us, and the territory within the human body itself. Today, we continue to forge ahead in exploring perhaps the most challenging universe of all. The examination of the very foundation of life - the Genetic Universe.

Exploration into this new molecular frontier will alter forever how we perceive the world and will carry science and mankind to a level that could only previously be imagined. We, at BioVentures, feel privileged to be a part of such a significant time in mankind's history of discovery. We hope that you will allow us to partner with you and supply those tools that will aid and guide you on your journey of discovery. Let us continue in the tradition of those that have gone before us and courageously seek to define that which is unknown and to bring it into the light of knowledge. We honor the explorer in all of you!

Along the way, we dedicate our efforts to key success criteria:
Innovation - Creativity - Leadership

- Developing and producing products that exceed both delivery and quality expectations.
- Supplying products and services that are unmatched for value and reliability.
- Providing innovative, robust and reliable products.
- Offering custom solutions.

SIZING STANDARDS AND MARKERS



BioMarker™ Expanding the Frontiers of Double Stranded DNA Sizing Accuracy

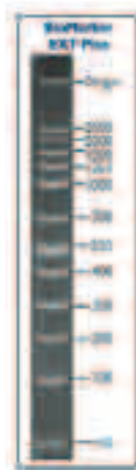
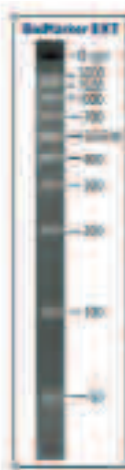
BioMarker™ sizing standards provide accurate sizing of dsDNA bands over different size ranges with nine bands of equal ethidium bromide intensity. Pre-treated to expose 5'OH groups, the markers are kinase ready, require no dephosphorylation and offer stability at ambient temperatures. BioMarker™ standards are optimal for determining size using gel electrophoresis, capillary electrophoresis, gel filtration chromatography and HPLC. Each BioMarker™ has a concentration of 10ng/band/ul with a recommended loading protocol of 5ul of BioMarker™ and 1ul of 6X Loading Dye(included).

All BioMarker™ standards are evaluated for resolution intensity and background on 10% acrylamide and 3:1 NuSieve Agarose gels with ethidium bromide staining. They are designed to provide fully resolved bands for accuracy without ambiguity or co-migration.

Custom configurations are also available, design online at www.bioventures.com, email support@bioventures.com or call customer support.

Ordering Information:

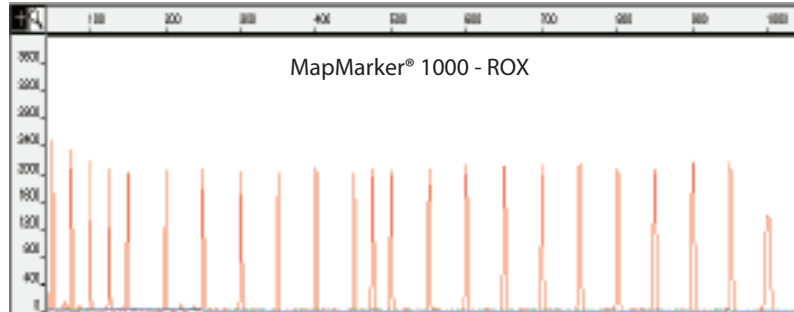
Catalog Number	Name	Description	Size
M1	BioMarker™ Low 50-1000bp	Contains linear double-stranded DNA bands of 1000; 700; 525; 500; 400; 300; 200; 100 and 50 base pairs.	50 Assays
M1A	BioMarker™ Low 50-1000bp (w/o 525 bp band)	Contains linear double-stranded DNA bands of 1000; 700; 500; 400; 300; 200; 100 and 50 base pairs.	50 Assays
MX	BioMarker™ EXT 50-2000bp	Contains linear double-stranded DNA bands of 2000; 1500; 1000; 700; 525; 500; 400; 300; 200; 100 and 50 base pairs.	50 Assays
MXA	BioMarker™ EXT 50-2000bp (w/o 525 bp band)	Contains linear double-stranded DNA bands of 2000; 1500; 1000; 700; 500; 400; 300; 200; 100 and 50 base pairs.	50 Assays
MXP	BioMarker™ EXT Plus 50-2500bp	Contains linear double-stranded DNA bands of 2500; 2000; 1500; 1250; 1000; 700; 525; 500; 400; 300; 200; 100 and 50 base pairs.	50 Assays
M2	BioMarker™ High 1000-3000bp	Contains linear double-stranded DNA bands of 1000; 1500; 2000; 2500; 3000 base pairs.	50 Assays
M10KB	BioMarker™ 10kb 1 kb-10kb	Contains linear double-stranded DNA bands of 1.0; 1.5; 2.0; 2.5; 3.0; 4.0; 5.0; 7.0 and 10 kilo bases (KB).	100 Assays



SIZING STANDARDS AND MARKERS

MapMarker®

The Next Generation in Single-Stranded Fluorescent DNA Sizing Standards



Above is an example of MapMarker® 1000 labeled with ROX containing bands of 50, 75, 100, 125, 150, 200, 250, 300, 350, 400, 450, 500, 550, 600, 650, 700, 750, 800, 850, 900, 950 and 1000

Accurate ■ Consistent ■ Precise ■ Compatible ■ Flexible

MapMarker® DNA sizing standards are sets of high quality fluorescently labeled DNA fragments designed to provide consistent intensities and migration patterns for DNA sizing standards and are compatible with the most commonly used fluorescent-based separation instruments systems, including capillary based gel electrophoresis systems. MapMarker® standards contain bands of singular DNA strands labeled with a single fluorophore, ranging from 50 to 1000 base pairs. The labeled DNA fragments are uniformly spaced to provide accurate base calling and precision sizing of samples. The standards are available with all of the most commonly used fluorescent dyes, including rhodamine, tetramethylrhodamine, x-rhodamine, fluorescein and Radiant Dye 632 (orange channel). Custom dyes and configurations are also available, visit www.bioventures.com to create a custom MapMarker®.

MapMarker® fluorescent standards are evaluated for resolution, intensity and background on denaturing polyacrylamide sequencing gels using laser excitation. They are free of extraneous peaks over their entire sizing range and are free of "pull up" signal in other channels. Additionally, these markers produce consistent within run and between run sizing within their size range creating a size curve that is linear, where the R² value is linear.

MapMarker® 1000 has been found to be very valuable within the research community for applications such as T-RFLP and forensic genotyping. During the process of T-RFLP some of the resulting products are longer than the typical 500bp that are found in most fluorescent based sizing standards. The MapMarker®1000 has filled this need by providing accurate sizing up to the 1000 base pair range.

MapMarker® standards are stable for a minimum of 18 months when stored in the dark at 4°C.

Ordering Information:

Catalog Number	Description	Size
MM-400	MM 400 contains 20 discrete DNA fragments ranging in size from 70 to 400 bases at 8fmol/band/ul. They are uniformly spaced at 70, 80, 90, 100, 120, 140, 160, 180, 190, 200, 220, 240, 260, 280, 300, 320, 340, 360, 380, and 400 base pairs.	400ul for 800 lanes (load 0.5ul/lane)
MM-1000	MM 1000 contains 23 discrete DNA fragments ranging in size from 50 to 1000 bases at 8fmol/band/ul. The fragments are 50, 75, 100, 125, 150, 200, 250, 300, 350, 400, 450, 475, 500, 550, 600, 650, 700, 750, 800, 850, 900, 950 and 1000 base pairs.	400ul for 800 lanes (load 0.5ul/lane)
MM-1000XL	MM1000XL contains 23 discrete DNA fragments ranging in size from 50 to 1000 bases at 16fmol/band/ul. The fragments are 50, 75, 100, 125, 150, 200, 250, 300, 350, 400, 450, 475, 500, 550, 600, 650, 700, 750, 800, 850, 900, 950 and 1000 base pairs.	200ul for 800 lanes (load 0.5ul/lane)
Custom Configuration	MapMarker® Custom standards are available in a size range of 30-2000bp. The markers can be brought to various concentrations depending on your specifications. Once your custom configuration is manufactured, it is tested for concentration, resolution and background. Custom markers from BioVentures are economical due to cost reduction by incorporating only the necessary bands. Call customer service or create online at www.bioventures.com	

KITS AND REAGENTS

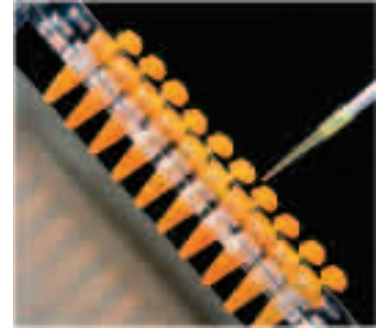
GeneReleaser® DNA/RNA Releasing Agent

GeneReleaser® is a five-minute protocol that provides PCR ready DNA/RNA quickly, yielding faster, simpler and more reliable PCR results than other reagents and negates the need for purifying DNA/RNA.

GeneReleaser® is composed of proprietary polymeric materials. It quickly facilitates the release of DNA from cells in a form suitable for PCR amplification. GeneReleaser® also segregates inhibitors released during lysis, along with preservation agents that may interfere with amplification. Most critically, it consistently provides amplifiable nucleic acids from minute amounts of material, consequently conserving often precious or rare sample materials.

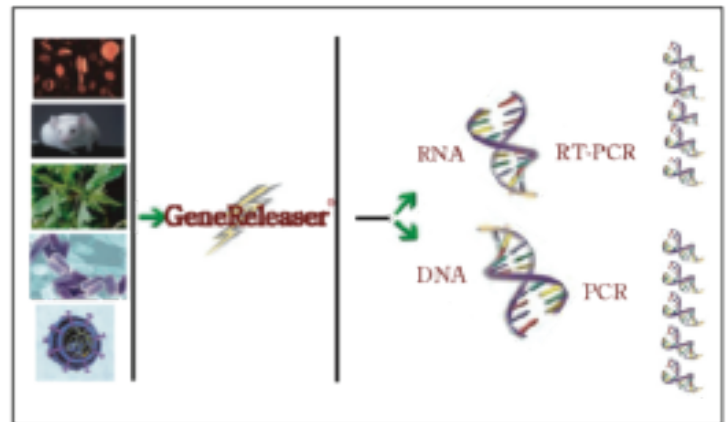
GeneReleaser® achieves lysis, releasing the DNA/RNA from the sample directly in the amplification tube on a thermal cycler within minutes; this time frame can be shortened using the microwave protocol. Full protocols are available for DNA/RNA preparation from diverse types of samples, including:

- Avian Viruses
- Mouse Tail
- Yeast
- Paraffin Embedded Tissue
- Mycobacterium Tuberculosis
- Buccal Cells
- Plant Tissue
- Whole Tissue
- HIV/WBC
- Semen/Sperm
- Soil or Sea Sediment



Top Features of GeneReleaser®

- Our longtime customers tell us their favorite feature of GeneReleaser® is its ability to perform "one tube" extractions. This is carried out by placing the sample in a PCR tube, adding GeneReleaser®, following the heat procedure, adding master mix, then amplifying the reaction in the same tube. "One tube" extraction saves time, reduces costs, and minimizes the possibility of contamination.
- Samples can be PCR ready in as little as 5 minutes using the microwave protocol and 10 minutes using the thermal cycler protocol.
- GeneReleaser® ensures improved PCR sensitivity, allowing for use of samples as small as 1µl of blood, 1mm sections of tissue, and 5µl of serum.
- Simple GeneReleaser® protocol.
- Cost effective and minimum "hands-on" time.



Ordering Information:

Catalog Number	Name	Description	Size
GR-T	GeneReleaser® Trial Size	GeneReleaser® quickly facilitates release of DNA in a form suitable for amplification.	50 Assays (20ul/assay)
GR-1	GeneReleaser® Full Size	GeneReleaser® quickly facilitates release of DNA in a form suitable for amplification.	400 Assays (20ul/assay)

KITS AND REAGENTS



Primiah® DNA Polymerase is a high quality enzyme perfect for routine PCR applications. At just pennies per unit this enzyme offers the same quality you have come to expect in your Taq polymerases without the high cost. Primiah® DNA polymerase is a standard enzyme for the amplification of DNA fragments up to 3 kb from simple (Lambda) to complex templates (plant, mouse , human) by polymerase chain reaction (PCR). For maximum convenience, multiple product formats are available: enzyme only, ready-to-use Primiah® MasterMix, and a complete kit including enzyme, mastermix, DNA isolation reagent and a DNA sizing standard for a start to finish solution.

Use this thermostable Taq DNA polymerase for:

- PCR
- RT-PCR
- Other primer-extension reactions, such as sequencing

Enzyme Specifications:

Initial Denaturation: 92°- 95° for 2 minutes

Hotstart: No

Extension Rate: average 1 minute per 1000 base pairs

Optimal Extension Temperature: 72°C - 74°C

Amplicon Size: up to 3 kb

Exonuclease Activity: No

Concentration: 5 units/ul

Storage Conditions: -20°C, minimize freeze-thaw cycles

Compatible with standard Taq polymerase protocols

Primiah® polymerase is Protease, DNase, RNase and Nucleic Acid free.

Total Solution

Primiah® PCR Kit offers the ultimate PCR process solution. Complete with GeneReleaser®, our proprietary polymeric agent that provides PCR ready DNA in as little as 5 minutes and BioMarker™ EXT DNA sizing standard for gel electrophoresis, you have all the reagents necessary for your PCR reaction from start to finish.

Kit Contents:

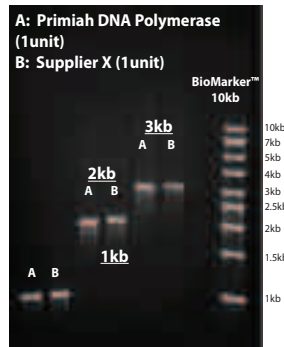
Primiah® DNA Polymerase (5units/ul)	size: 100 units
Primiah® MasterMix (2X)	size: 100 reaction
GeneReleaser® (20ul/reaction)	size: 100 assays
BioMarker™ EXT 50-2000bp (5ul/assay)	size: 100 assays

Ordering Information:

Catalog Number	Name	Description	Size
PRI-500	Primiah® DNA Polymerase	DNA Polymerase for amplification of <3kb, 5 units/ul, non-hotstart enzyme	500 units
PRI-501	Primiah® MasterMix	2X PCR MasterMix containing buffers, 400uM dNTP's and 4mM MgCl2. Reactions based on 25ul volume.	500 rxn
PRI-KIT	Primiah® PCR Complete Kit	Kit contains: Primiah® MasterMix (100 rxn), Primiah® DNA Polymerase (100unit), GeneReleaser® (100 assay) and BioMarker™ EXT (100 assay)	1 Kit

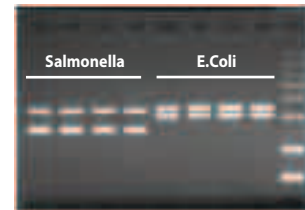
Primiah® Applications:

1. Standard PCR, 0-3kb



Amplification of 1kb, 2kb and 3kb fragments of Lambda DNA using one unit of (A) Primiah® DNA Polymerase with Primiah® Master Mix and (B) Supplier X with manufacturers recommended buffers.

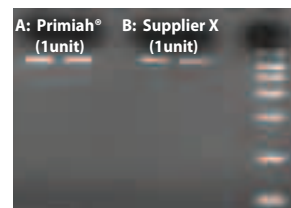
2. MultiPlex PCR



Amplification of Salmonella and E.Coli templates using Salmomella and E.Coli primer mixes, 2 primer pairs/reaction. 1 unit of Primiah DNA Polymerase in a 20ul reaction volume.

PCR Program: MJ gradient cycler
 Step 1: 95°C for 30 seconds
 Step 2: 92°C for 2 seconds
 58°C for 2 seconds
 72°C for 5 seconds
 repeat Step 2 for 35 cycles
 Step 3: 72°C 30 seconds

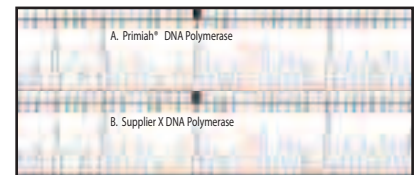
3. Fast PCR



Amplification of 525 fragment of Human DNA using one unit of (A) Primiah® DNA Polymerase with Primiah® Master Mix and (B) Supplier X with manufacturers recommended buffers using a fast PCR protocol.

PCR Program: Finnzymes Piko Cycler
 Step 1: 95°C for 30 seconds
 Step 2: 92°C for 1 second
 58°C for 1 second
 72°C for 3 seconds
 repeat Step 2 for 35 cycles
 Step 3: 72°C 30 seconds

4. Sequencing



Representative electropherogram of sequenced PCR product. Cycle Sequencing was performed using ABI BigDye® Terminator Mix from 2ul template amplified with (A) Primiah DNA Polymerase and (B) Supplier X.

M16sS Bacterial Ribotyping Kit for T-RFLP Profiling

The logo for the M16sS Bacterial Ribotyping Kit. It features the text "M16sS" in a serif font. The "16" is in a light blue color, while the "M", "s", and "S" are in a dark brown color. The text is overlaid on a dark grey, oval-shaped background.

BioVentures has always strived to stay at the forefront of research, all the while keeping in mind the customer's time and cost, the M16sS Bacterial Ribotyping Kit is just one example of such thinking. This kit provides researchers with virtually every component necessary to take their sample from start to finish. The protocols take into consideration the researchers time and how to make the most of it. With the inclusion of almost every component, time and cost are reduced.

Advantages

The M16sS Bacterial Ribotyping Kit boasts multiple advantages including:

1. Virtually every component included.

There will be no need to place several orders in order to obtain all necessary components. Included in the kit are tools for DNA extraction, PCR amplification, PCR product purification, restriction enzyme digests along with detailed protocols for each step and references for data analysis. The company's website www.bioventures.com also contains more detailed help with data analysis.

2. Compatibility with multiple formats: Equipment

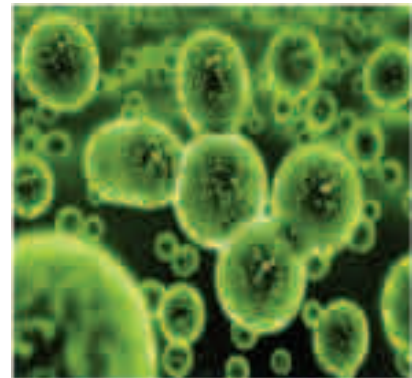
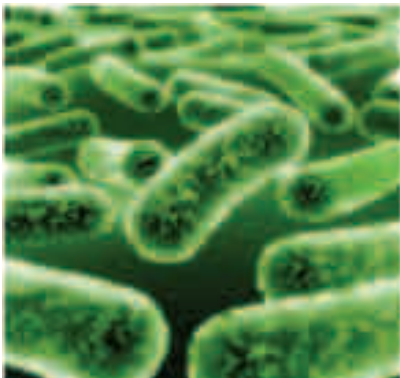
The components of the kits are supplied as performance validated solutions, which are easily dispensed to accommodate multiple formats. This kit has been validated using both the ABI Prism 310[®] and ABI Prism[®] 3100, but is compatible with virtually any fluorescence detecting instrument capable of detecting FAM, HEX and ROX.

3. Compatibility with multiple formats: Data Analysis

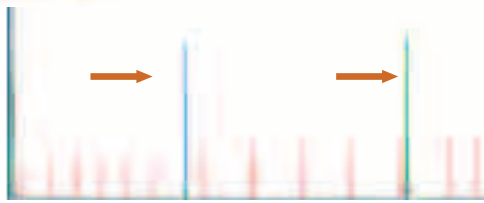
Once the data has been obtained, the researcher may use the recommended program for analysis, Frag Sort 5[®], or one of their choosing. The advantageous aspect of the recommended program is that it comes preloaded with a database and primers that are compatible with the ones included in this kit or the user may create their own database but still use the easy to use interface of Frag Sort 5[®].

4. Experimental protocols designed for customer convenience.

These protocols include detailed rapid DNA extraction. GeneReleaser[®] provides PCR ready DNA quickly. It facilitates the release of DNA from cells in a form suitable for PCR amplification. Additionally, step-by-step instructions are included for each step through data analysis.



KITS AND REAGENTS



M16sS Protocol Overview

Step 1. DNA Extraction

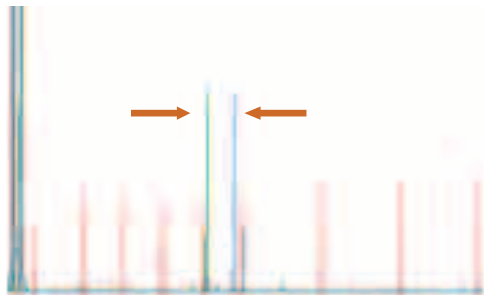
GeneReleaser® allows the user to rapidly extract PCR ready DNA.

Step 2. PCR Amplification

Amplification is performed using fluorescently labeled primers that will later allow the user to obtain labeled fragments.

Step 3. PCR Product Purification

PCR product purification prepares the PCR product for restriction enzyme digests by eliminating excess salts.

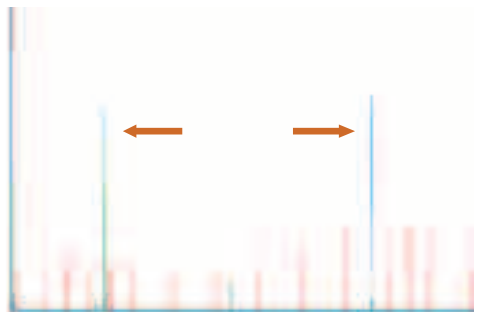


Step 4. Restriction Enzyme Digests

Using Hha I, Msp I and Rsa I will produce fragments that will allow the user to create a profile for their sample. When further specificity is needed, more restriction enzymes can be incorporated.

Step 5. Preparing sample for analysis on Fluorescence Detector Equipment

Once restriction enzyme digests are completed, the sample is purified by precipitation to eliminate excess salts that can cause problems with electrokinetic injection. The cleaned labeled fragments are ready to load onto the fluorescence detecting equipment for analysis.



Step 6. Sizing of Restriction Fragments for identification

This is made simple with the inclusion of the size standard MapMarker® 1000. MapMarker®1000 contains 23 discrete DNA fragments from 50 to 1000 basepairs. This size range is particularly useful for the T-RFLP method since some of the products that are produced from digestion are larger than the typical length of 500 base pairs that one would find in most size standards.

Step 7. Data Analysis

Once labeled fragments have been sized, the researcher can use the recommended method of analysis to compile a list of organisms that are present in the sample. You may also use a program of your choosing to analyze your data.

Web Based Technical Information

Additional information on the recommended data analysis program, Frag Sort 5®, is available at <http://www.oardc.ohio-state.edu/trflpfragsort/index.php>.

The user will be able to download example files that will allow them to gain hands on experience with the program before using it, along with screen shots to allow them to see what they should be seeing at a particular step. The site will also contain a patch that may be necessary for the user to upload in order to size using the MapMarker® 1000 on the ABI® Prism 310 or ABI® Prism 3100.

Technical Support

BioVentures is well known for our friendly and complete customer service. We are happy to reach out to our customers to help with any questions.

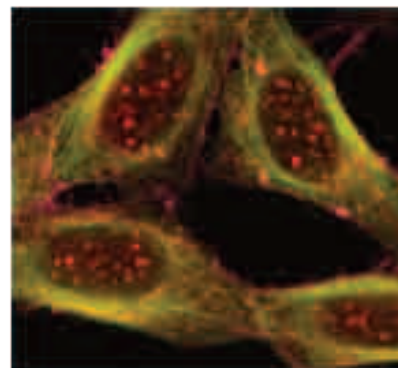
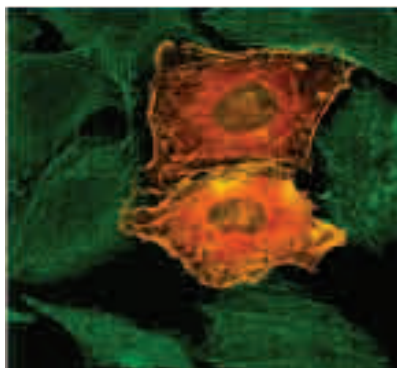
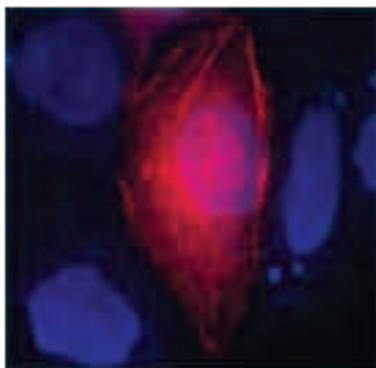
Catalog Number	Name	Description	Size
M16sS	M16sS Bacterial Ribotyping Kit	Kit Contents: GeneReleaser® DNA extraction mix, Labeled Amplification Primers, 2X Amplification Buffer, BioMarker® EXT dsDNA sizing standard, Restriction Enzymes and Digestion Buffers, MapMarker® 1000 ROX-labeled ssDNA sizing	100 Assays

FLUORESCENT DYES

RadiantDy™ Fluorescent Dyes

The production of new chromophores has extensively changed the possibilities for detection of biomolecules and their interaction, enabling previously impossible insights to be made. The RadiantDy™ fluorescent dyes are of incredible quality and available in a wide range of excitation and emission spectra from 400 - 844nm, including megastokes dyes and quenchers.

Each RadiantDy™ is available with multiple modifications including NHS esters, maleimides, hydrazides, carboxylic acids and amino derivatives. The increased water solubility of many of the RadiantDy™ fluorescent dyes allows a high label-to-protein ratio without



Aminoreactive Dyes

Primary amino groups are natural components of peptides and proteins, which consist of amino acids. At least one amino group is positioned at the N-terminus of the peptide chain. Other biomolecules can be modified in such a way that an amino group is incorporated without changing its activity or functionality. The most common examples are 5'-aminommodified DNA oligomers and cDNA bearing aminoallyl-dU-units. There are several functional groups, which react with primary amino groups forming a covalent bond between the dye and the amino containing (bio-) molecule under mild conditions not harmful to biologically active compounds. The most common reactive group being the NHS-ester (N-Hydroxysuccinimidyl-ester). At a pH between 8 and 9, the NHS-ester reacts specifically with primary amino groups. Depending on the purity (content of active NHS-ester), quantitative yields can be achieved.



Maleimides

As well as primary amino groups, thiol groups are preferred targets for fluorescent labels. There are various chemical moieties which form stable chemical bonds with thiol groups, including maleimides and iodoacetamides. The low influence of a neutral thiol-reactive label on the isoelectric point of a protein is an advantage over the labeling of amino groups in proteins and makes differential 2D-gel electrophoresis possible. Maleimides couple to thiol groups under very mild conditions at pH around 7.



Aminommodified Dyes

Labels with amino groups can be used for cross coupling to carboxy groups via a mild in-situ activation. Aminommodified labels can also be incorporated into a matrix during polymerization. Coupling reactions should be performed at pH 8.5 or higher since the dyes are delivered as ammonium salts.

FLUORESCENT DYES

RadiantDy™ Fluorescent Dyes

Featured RadiantDy™ Fluorescent dyes

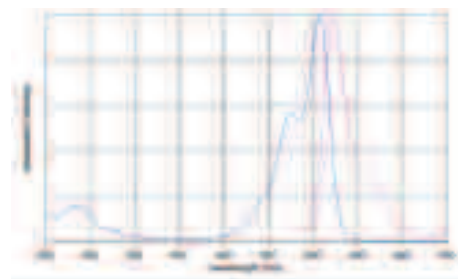
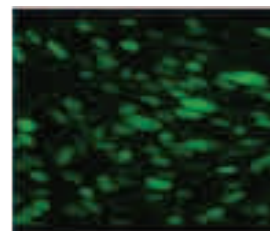
RadiantDy™ - 547

Absorption/emission max:
557 nm / 574 nm (in Ethanol)

Molar absorbance:
150.000 M-1cm-1

Comments:

- spectrally similar to Cy3™ and AlexaFluor® 555
- usually used in combination with DY-647
- Trimethine cyanine
- soluble in water, methanol, DMF, DMSO
- suitable for protein labeling, microarray experiments, FisH microscopy, and gel electrophoresis



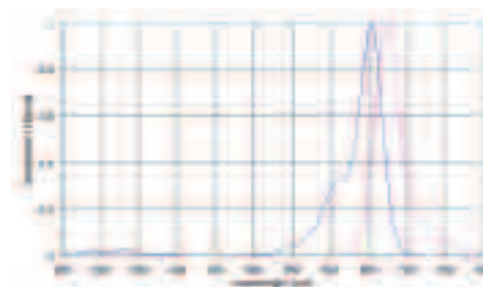
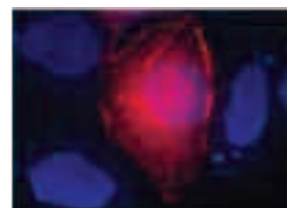
RadiantDy™ - 647

Absorption/emission max:
653 nm / 672 nm (in Ethanol)

Molar absorbance:
250.000 M-1cm-1

Comments:

- spectral similar to Cy5™ and AlexaFluor® 647
- usually used in combination with DY-547
- Pentamethine based fluorophore
- soluble in water, methanol, DMF, DMSO
- bright solid state emission
- suitable for protein labeling, microarray experiments, FisH microscopy, and gel electrophoresis



Ordering Information:

Catalog Number	Name	Modification	Molecular Weight (g/mol)	Molecular Formula	Size
RD-547-NHS	RadiantDy™547 NHS	NHS-ester	735.81	C ₃₄ H ₃₈ N ₃ O ₁₀ S ₂ Na	1mg
RD-547-MAL	RadiantDy™ 547 MAL	Maleimide	760.87	C ₃₆ H ₄₁ N ₄ O ₉ S ₂ Na	1mg
RD-647-NHS	RadiantDy™647 NHS	NHS-ester	761.85	C ₃₆ H ₄₀ N ₃ O ₁₀ S ₂ Na	1mg
RD-647-MAL	RadiantDy™647 MAL	Maleimide	786.91	C ₃₈ H ₄₃ N ₄ O ₉ S ₂ Na	1mg

FLUORESCENT DYES

RadiantDy™ Fluorescent Dyes

RadiantDy™ Fluorescent dyes - Available for Special Order

All RadiantDy™ fluorescent dyes are available with the following modifications:

NHS-Ester (RD-Dye-NHS)
Maleimide (RD-Dye-MAL)
Hydrazide (RD-Dye-HYD)
Carboxylic Acid (RD-Dye-CXA)
Amino-derivative (RD-Dye-AM)

Dye Name	Absorbance (max)	Molar abs. (max)	Emission	Molecular Weight	Dye Equivalent or Spectrally Similar
RadiantDy-350	353	19'000	432	689.86	
RadiantDy-405	400	32'000	420	695.59	
RadiantDy-415	418	34'000	467	476.48	
RadiantDy-490	490	73'000	516	769.67	AlexaFluor® 488
RadiantDy-495	493	70'000	521	525.94	Fluorescein based
RadiantDy-505-X5	505	80'000	530	523.97	
RadiantDy-530	539	100'000	561	715.85	
RadiantDy-547	557	150'000	574	638.74	Cy3™ / Alexa Fluor®555
RadiantDy-548	558	150'000	572	754.81	
RadiantDy-549	560	150'000	575	884.91	
RadiantDy-554	551	100'000	572	580.08	TAMRA based
RadiantDy-555	547	100'000	572	636.19	Rhodamine B based
RadiantDy-556	548	100'000	573	715.8	Rhodamine B based
RadiantDy-560	559	120'000	578	671.84	Rhodamine based
RadiantDy-590	580	120'000	599	719.88	Texas Red
RadiantDy-594	589	92'000	614	979.14	
RadiantDy-610	610	80'000	630	667.76	
RadiantDy-615	621	200'000	641	578.73	
RadiantDy-630	636	200'000	657	634.84	
RadiantDy-631	637	200'000	658	736.88	
RadiantDy-632	637	200'000	657	852.96	
RadiantDy-633	637	200'000	657	750.91	
RadiantDy-634	635	200'000	658	969.03	
RadiantDy-635	647	200'000	671	658.86	
RadiantDy-636	645	200'000	671	760.91	
RadiantDy-647	653	250'000	672	664.78	Cy5™ / Alexa Fluor®647
RadiantDy-648	653	250'000	674	780.85	
RadiantDy-649	655	250'000	676	910.95	
RadiantDy-650	653	220'000	674	686.92	
RadiantDy-651	656	220'000	678	788.96	
RadiantDy-652	654	220'000	675	905.03	
RadiantDy-FatRed	656	95'000	680	697.88	
RadiantDy-654	679	200'000	698	1119.19	
RadiantDy-675	674	180'000	699	706.91	
RadiantDy-676	674	180'000	699	808.95	
RadiantDy-677	673	180'000	694	925.02	Cy5.5™ / Alexa Fluor®680

FLUORESCENT DYES

RadiantDy™ Fluorescent Dyes

RadiantDy™ Fluorescent dyes - Available for Special Order

All RadiantDy™ fluorescent dyes are available with the following modifications:

NHS-Ester (RD-Dye-NHS)
Maleimide (RD-Dye-MAL)
Hydrazide (RD-Dye-HYD)
Carboxylic Acid (RD-Dye-CXA)
Amino-derivative (RD-Dye-AM)

Dye Name	Absorbance (max)	Molar abs.	Emission (max)	Molecular Weight	Dye Equivalent or Spectrally Similar
RadiantDy-681	691	140'000	708	736.88	
RadiantDy-682	690	140'000	709	852.96	
RadiantDy-700	707	140'000	730	668.86	
RadiantDy-701	706	140'000	731	770.9	
RadiantDy-703	700	140'000	732	844.02	
RadiantDy-730	732	240'000	758	660.88	
RadiantDy-731	736	240'000	760	762.92	
RadiantDy-732	736	240'000	759	879	
RadiantDy-734	736	240'000	759	995.07	
RadiantDy-749	752	250'000	778	936.99	
RadiantDy-750	747	270'000	776	712.96	Cy7™
RadiantDy-751	751	270'000	779	814.99	
RadiantDy-752	748	270'000	772	931.07	
RadiantDy-754	748	270'000	775	1053.22	
RadiantDy-776	771	240'000	801	834.98	
RadiantDy-777	771	220'000	801	951.06	
RadiantDy-780	782	170'000	800	660.88	
RadiantDy-781	783	170'000	800	762.92	
RadiantDy-782	784	170'000	800	879	
RadiantDy-800	777	280'000	–	953.08	
RadiantDy-831	844	220'000	–	788.96	
MegaStokes Dyes					
RadiantDy-480XL	500	50'000	630	514.6	
RadiantDy-481XL	515	50'000	650	630.67	
RadiantDy-485XL	485	50'000	560	502.59	
RadiantDy-510XL	509	50'000	590	554.67	
RadiantDy-520XL	520	50'000	664	514.6	
RadiantDy-521XL	523	50'000	668	630.67	
Quenchers					
RadiantDyQ-660	660	140'000	–	668.86	
RadiantDyQ-661	662	140'000	–	770.9	
DYQ1	547	44'000		808.87	Use with DY-551,556,560,590
DYQ2	641	90'000		765.91	Use with DY-555,556,560,590, 591,615, and 632
DYQ3	683	80,000		822.96	Use with DY-632,634,652,654, and 682

We take pipetting
to **perfection.**



Featuring:

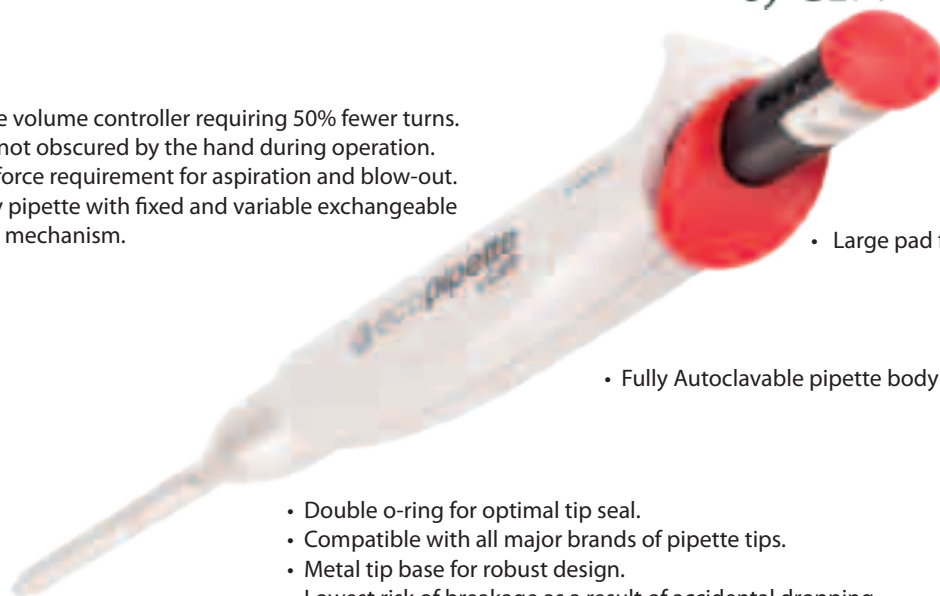
- **ecotrade™ pipette recycling program**
- **Single Channel Pipettes**
- **Multi Channel Pipettes**
- **Single Channel Electronic Pipettes**
- **Multi Channel Electronic Pipettes**
- **Specialty Pipettes**
- **Low Retention Tips – Filter and Non Filter tips**
- **Pipette Stands**
- **Reagent Reservoirs**
- **Timers**



PIPETTES, TIPS AND ACCESSORIES



- Lockable volume controller requiring 50% fewer turns.
- Display not obscured by the hand during operation.
- Lowest force requirement for aspiration and blow-out.
- The only pipette with fixed and variable exchangeable counter mechanism.



- Large pad for ease of tip ejection.

- Fully Autoclavable pipette body with no need to disassemble.








- Double o-ring for optimal tip seal.
- Compatible with all major brands of pipette tips.
- Metal tip base for robust design.
- Lowest risk of breakage as a result of accidental dropping.

ecotrade™ Recycling Program

Your old and broken pipettes are worth a \$100 credit towards the purchase of a new ecopipette™ or a \$50 credit towards the purchase of any type of Capp pipette.

Its simple...

1. Return your old pipette to BioVentures (and brand) to be recycled.
2. Receive a discount code for \$50 to \$100 toward the purchase of a new Capp pipette.

Catalog Number	Name	Description	Cap Color	
C02-1S	ecopipette C02	Single pipette, variable vol. 0.2-2 ul	Violet	
C10-1	ecopipette C10	Single pipette, variable vol. 0.5-10 ul	White	
C20-1	ecopipette C20	Single pipette, variable vol. 2-20 ul	Gray	
C50-1	ecopipette C50	Single pipette, variable vol. 5-50 ul	Red	
C100-1	ecopipette C100	Single pipette, variable vol. 10-100 ul	Orange	
C200-1	ecopipette C200	Single pipette, variable vol. 20-200 ul	Yellow	
C1000-1	ecopipette C1000	Single pipette, variable vol. 100-1000 ul	Blue	
SK-03-ECO-CUSTOMT	ecopipette ecoBundle	3 ecopipettes, any volume, 3 racks of tips, 1 pipette stand, 1 timer		

PIPETTES, TIPS AND ACCESSORIES

Capp® Single Channel Pipettes

CappAero single pipettes are made with the greatest attention to the user comfort and product reliability. They offer a great number of unique advantages, such as easily exchangeable adjustable volume knobs, o-rings at the tip base for ultimate tip compatibility, clearly visible color coding, no deformation of the tip base over time, fully autoclavable pipette body and much more.

CappAero™ Single Comfort Pipette

Get 70% thumb relief with CappAero™ comfort. The incorporation of a separate tip ejection lever allows you to quickly and simply ejects the tip without the need to use your thumb. The unique design reduces the risk of pipetting related repetitive strain injuries while providing more comfort for your hand.

Catalog Number	Name	Volume	Color Code	Tips
C10-1A-SL	CappAero SL C10	0.5-10ul	White	10S, 10L
C20-1A-SL	CappAero SL C20	2-20ul	Gray	20
C50-1A-SL	CappAero SL C50	5-50ul	Red	100
C100-1A-SL	CappAero SL C100	10-100ul	Orange	100, 200
C200-1A-SL	CappAero SL C200	20-200ul	Yellow	200
C1000-1A-SL	CappAero SL C1000	100-1000ul	Blue	1000
C5000-1A-SL	CappAero SL C5000	1-5ml	Green	5000
SK-03-C10-1AT	CappAero ecoBundle	3 Pipettes (C10-1A, C100-1A, C1000-1A) 3 racks of tips, 1 pipette stand, 1 timer		
SK-03-CL-CUSTOMT	CappAero ecoBundle	3 CappAero SL pipettes, any volume 3 racks of tips, 1 pipette stand, 1 timer		

Soft Handle and External Tip Ejector



CappAero™ Universal pipette

The CappAero™ Universal pipette has all pipetting functions (dispense, blow-out and tip ejection) comfortably combined in one button.

Catalog Number	Name	Volume	Color Code	Tips
C02-1C (short)	CappAero C02	0.2-2ul	Violet	10S, 10L
C10-1B	CappAero C10	0.5-10ul	White	10S, 10L
C20-1B	CappAero C20	2-20ul	Gray	20
C50-1B	CappAero C50	5-50ul	Red	100
C100-1B	CappAero C100	10-100ul	Orange	100, 200
C200-1B	CappAero C200	20-200ul	Yellow	200
C1000-1B	CappAero C1000	100-1000ul	Blue	1000

Dispense, blow out and tip ejection in one button

PIPETTES, TIPS AND ACCESSORIES

Capp® Multi Channel Pipettes

Capp offers the most comprehensive range of multi-channel pipettes. Starting with 8 and 12 channels, the assortment also comprises 16, 48 and 64 channel pipettes that are compatible with SBS384 well spacing (4.5mm). Anodized aluminum, high-grade stainless steel and durable plastics combine to make Capp Multi Pipettes the most robust of all. The metal tip bases are very robust and do not deform over time. In addition the tip bases are individually changeable, therefore in the unlikely event that a tip base is



The unique DoubleSafe™ o-ring feature on Capp 8 and 12 channel pipettes allows for an effortless and leak free mounting of a wide range of the most commonly available tips. This feature, combined with the lever tip ejection principle, allows the Capp Multi Pipettes to be free from tip mount and tip ejection problems.

Catalog Number	Name	Type	Volume	Color Code	Tips
C10-8-SL	CappAero Multi C10	8-channel	0.5-10ul	White	10S, 10L
C50-8-SL	CappAero Multi C50	8-channel	5-50ul	Red	100, 200
C200-8-SL	CappAero Multi C200	8-channel	20-200ul	Yellow	200
C10-12-SL	CappAero Multi C10	12-channel	0.5-10ul	White	10S, 10L
C50-12-SL	CappAero Multi C50	12-channel	5-50ul	Red	100, 200
C200-12-SL	CappAero Multi C200	12-channel	20-200ul	Yellow	200

Most work involving the 384 well configuration is using expensive automation, however Capp makes it possible to pipette quickly and with high precision using the manual 384 well pipetting system therefore no need to make the heavy investment in automation. Now it is possible to easily, confidently, and with high speed manually pipette onto microarray slides, MALDI TOF plates and 384 well plates.

Catalog Number	Name	Type	Volume	Color Code
C02-16-SL	CappAero Multi 384 C02	16-channel	0.2-2ul	Violet
C10-16-SL	CappAero Multi 384 C10	16-channel	0.5-10ul	White
C50-16-SL	CappAero Multi 384 C50	16-channel	5-50ul	Red
C10-48	CappAero Multi 384 C10-48	48-channel	0.5-10ul	White
C10-64	CappAero Multi 384 C10-64	64-channel	0.5-10ul	White



ExpellPlus Tips for 384-well Manual Pipetting

Catalog Number	Description	Tips/Rack	Racks/Case
5030003	ExpellPlus 0.2-30ul, Sterile, hinged racks	384	10
5030003C	ExpellPlus 0.2-30ul, Sterile, hinged racks	384	50
5030004	ExpellPlus 0.2-30ul, Sterile w/filter, hinged racks	384	10
5030004C	ExpellPlus 0.2-30ul, Sterile w/filter, hinged racks	384	50
5030005	ExpellPlus 0.2-70ul long, Sterile, hinged racks	384	10
5030005C	ExpellPlus 0.2-70ul long, Sterile, hinged racks	384	50
5030006	ExpellPlus 0.2-70ul long, Sterile w/filter, hinged racks	384	10
5030006C	ExpellPlus 0.2-70ul long, Sterile w/filter, hinged racks	384	50

PIPETTES, TIPS AND ACCESSORIES

Speciality Pipettes

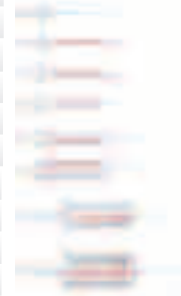
Rhythm Mechanical Repeater

The Capp Rhythm Repeater provides reliable ergonomics for your lab routine without sacrificing ultimate precision. This lightweight repeater covers the complete set of dispensing volumes for 1ul - 50ml with single-handed volume selection, loading and dispensing and comes with a one-year warranty.

The precise repeating syringes are available in 8 sizes from 50ul(1=1ul) to 50ml and come in individually wrapped sterile



Catalog Number	Description
PR50	Capp Rhythm Repeater, 1ul - 50ml
PR-50AD	Adapter for 25ml and 50ml syringes, 3pcs.
SK-PR-50	One Capp Rhythm Repeater and one syringe sample pack incl: 5 ea of 0.5-25ml and 5 ea of sterile 2.5ml, 5ml, and 12.5ml
RS-01S-C	Capp syringes, 0.05ml (1=1ul), sterile individually wrapped 100/pack
RS-02S-C	Capp syringes, 0.5ml (1=10ul), sterile individually wrapped 100/pack
RS-03S-C	Capp syringes, 1.25ml (1=25ul), sterile individually wrapped 100/pack
RS-04S-C	Capp syringes, 2.5ml (1=50ul), sterile individually wrapped 100/pack
RS-05S-C	Capp syringes, 5.0ml (1=100ul), sterile individually wrapped 100/pack
RS-06S-C	Capp syringes, 12.5ml (1=250ul), sterile individually wrapped 100/pack
RS-07S-C	Capp syringes, 25.0ml (1=500ul), sterile individually wrapped 25/pack
RS-08S-C	Capp syringes, 50.0ml (1=1000ul), sterile individually wrapped 25/pack
RS-00-C	Capp syringe sample pack: 5 ea of 0.5-25ml and 5 ea of sterile 2.5ml, 5ml, and 12.5ml



Microbiology Pipette and Sterile Straws

The Capp Microbiology pipette is ideal for microbiology tests in the food industry. This pipette is supplied with fixed volume knobs at 100ul, 900ul and 1000ul and has a modified tip cone suited for use with a sterile extended length straw. This allows further reach and pipetting of viscous liquids such as milk, cream, yogurt and cosmetics. It is an ideal instrument for protocols








Catalog Number	Description
C1000-1BS	Capp Microbiology Pipette with 100ul, 900ul and 1000ul volume knobs
4170807	Pre-Sterile straws for Capp Microbiology Pipette (1000 straws in packs of 25)

PIPETTES, TIPS AND ACCESSORIES

Electronic Pipettes

CappTronic™ is easy to set and comes with the most widely used pipetting modes, including forward and reverse pipetting, multi-dispense, mixing and sequential dispensing. Up to nine individual protocols can be stored. Two long-life and easily exchangeable lithium batteries allow for uninterrupted pipetting without the need to stop work in order to recharge. O-rings at the tip base provide an excellent fit with a great variety of universal fitting tips.



Catalog Number	Name	Volume	Color
E20-1BA	CappTronic™ single E20	2-20ul	Red 
E200-1BA	CappTronic™ single E200	10-200ul	Yellow 
E1000-1BA	CappTronic™ single E1000	100-1000ul	Blue 
E20-8BA	CappTronic™ multi E20	2-20ul	Red 
E200-8BA	CappTronic™ multi E200	10-200ul	Yellow 
E-Stand	Stand for three CappTronic pipettes		



CappAid™ Motorized Pipette Controller

The CappAid accommodates glass or plastic pipettes ranging from 100ul to 100ml and it features a powerful lithium battery with a life of 12 hours of continual use. It has a dispense selection of gravity and blow-out with a fully adjustable speed setting. It is designed so that it can be placed on the bench top with the pipette mounted - without the pipette touching the bench. The CappAid™ is UV resistant and has a fully autoclavable nose piece. It comes with an exchangeable 0.2um PTFE disc filter and has a protecting design for venting out corrosive liquids or fumes.



Capp Serological Pipettes

These pipettes are designed for accurate(1-2%) and rapid fluid dispensing. They are made from transparent polystyrene, sterilized by gamma irradiation, tested for endotoxins, cytotoxicity and guaranteed non-hemolytic. Supplied in sterile individually wrapped, pyrogen free they are cotton plugged for a variety of liquid handling applications. The pipettes are manufactured with a uniform mouth piece designed to fit all brands motorized pipette controllers and are color coded for easy identification.

Catalog Number	Description	Color Code	Qty/Case
PA-100	CappAid Pipette Controller, 0.1-100ml		1
PA-100FT	CappAid Disposable Filter, 0.2um		1
PA-100NC	CappAid Autoclavable Nose Cone		1
PA-100TH	CappAid Silicone Pipette Holder		1
SP-1-C	Serological Pipette, 1ml, individually wrapped	Yellow	800
SP-2-C	Serological Pipette, 2ml, individually wrapped	Green	600
SP-5-C	Serological Pipette, 5ml, individually wrapped	Blue	400
SP-10-C	Serological Pipette, 10ml, individually wrapped	Orange	400
SP-25-C	Serological Pipette, 25ml, individually wrapped	Red	200
SP-50-C	Serological Pipette, 50ml, individually wrapped	Purple	180



PIPETTES, TIPS AND ACCESSORIES

Pipette Accessories

Capp exchangeable variable and fixed volume knobs for pipettes offer a great cost savings solution for those labs who pipette in just a few set volumes the majority of the time. The fixed volume knobs allow your variable Capp single channel pipette to convert to a fixed volume pipette without the expense of purchasing a complete pipette.

Extra Volume Knobs for Capp Single-Channel Manual Pipettes

Variable Volume Knobs

Catalog Number	Description
2-VZ	Variable Volume Controller Knobs for 0.2-2ul pipettes
10-VZ	Variable Volume Controller Knobs for 0.5-10ul pipettes
20-VZ	Variable Volume Controller Knobs for 2-20ul pipettes
50-VZ	Variable Volume Controller Knobs for 5-50ul pipettes
100-VZ	Variable Volume Controller Knobs for 10-100ul pipettes
200-VZ	Variable Volume Controller Knobs for 20-200ul pipettes
1000-VZ	Variable Volume Controller Knobs for 100-1000ul pipettes
5000-VZ	Variable Volume Controller Knobs for 1000-5000ul pipettes



Fixed Volume Knobs

Catalog Number	Description
02-FZ-1	1ul Fixed Volume Controller Knobs for 0.2-2ul pipettes(except ecopipettes)
02-FZ-2	2ul Fixed Volume Controller Knobs for 0.2-2ul pipettes(except ecopipettes)
10-FZ-5	5ul Fixed Volume Controller Knobs for 0.5-10ul pipettes(except ecopipettes)
10-FZ-10	10ul Fixed Volume Controller Knobs for 0.5-10ul pipettes(except ecopipettes)
20-FZ-10	10ul Fixed Volume Controller Knobs for 2-20ul pipettes(except ecopipettes)
20-FZ-20	20ul Fixed Volume Controller Knobs for 2-20ul pipettes(except ecopipettes)
50-FZ-20	20ul Fixed Volume Controller Knobs for 5-50ul pipettes(except ecopipettes)
50-FZ-25	25ul Fixed Volume Controller Knobs for 5-50ul pipettes(except ecopipettes)
50-FZ-50	50ul Fixed Volume Controller Knobs for 5-50ul pipettes(except ecopipettes)
100-FZ-30	30ul Fixed Volume Controller Knobs for 10-100ul pipettes(except ecopipettes)
100-FZ-50	50ul Fixed Volume Controller Knobs for 10-100ul pipettes(except ecopipettes)
100-FZ-100	100ul Fixed Volume Controller Knobs for 10-100ul pipettes(except ecopipettes)
200-FZ-100	100ul Fixed Volume Controller Knobs for 20-200ul pipettes(except ecopipettes)
200-FZ-200	200ul Fixed Volume Controller Knobs for 20-200ul pipettes(except ecopipettes)
1000-FZ-500	500ul Fixed Volume Controller Knobs for 100-1000ul pipettes(except ecopipettes)
1000-FZ-1000	1000ul Fixed Volume Controller Knobs for 100-1000ul pipettes(except ecopipettes)

Accessories include three types of pipette holders: A rotary stand to hold up to 6 pipettes and a modular stand which can be extended to hold any number of pipettes and a wall mount holder for one pipette.

Catalog Number	Description
C-01	Combi stand for up to 2 single channel pipettes
S-06	Carousel stand for up to 5 single channel pipettes
W-1M	Wall mount for for one manual pipette
T-01	Laboratory Timer



C-01

S-06

(2 put together)

PIPETTES, TIPS AND ACCESSORIES

Pipette Tips

Expell Pipette Tips

Due to special polymers and an extremely smooth inside surface, the ExpellPlus™ tips from Capp virtually eliminate sample retention, and reduce the binding of DNA, RNA and Proteins to a very minimum. Perfectly matched with the

ExpellPlus™ Low Retention Properties

Tests show that the ExpellPlus™ tips deliver volumes within 0.1% of the set volume, versus 0.5-0.7% for standard tips. This significant difference in sample retention also is clearly visible when pipetting dyes liquid.

ExpellPlus™ Filter Tips

The ExpellPlus™ tips also comprise a very affordable and high quality range of filter tip to alleviate the risk of cross contamination. The ExpellPlus™ filter tips are tested and certified to conform to strict bio-load specifications.

ecoReload™ System

A special ecoReload™ system makes re-filling of racks easier than ever, and is designed to save cost and help preserve nature.



Catalog Number	Description	Tips/Rack	# Rack/Box (total tips)
5030030	ExpellPlus 10ul, Sterile w/filter, hinged racks	96	10 (960 tips)
5030030C	ExpellPlus 10ul, Sterile w/filter, hinged racks	96	50 (4800 tips)
5030020	ExpellPlus 10ul, Sterile, hinged racks	96	10 (960 tips)
5030020C	ExpellPlus 10ul, Sterile, hinged racks	96	50 (4800 tips)
5030035	ExpellPlus 10ul, ecoReload cards	96	20 (1920 tips)
5030035C	ExpellPlus 10ul, ecoReload cards	96	80 (7680tips)
5030060	ExpellPlus 10ul long, Sterile w/filter, hinged racks	96	10 (960 tips)
5030060C	ExpellPlus 10ul long, Sterile w/filter, hinged racks	96	50 (4800 tips)
5030050	ExpellPlus 10ul long, Sterile, hinged racks	96	10 (960 tips)
5030050C	ExpellPlus 10ul long, Sterile, hinged racks	96	50 (4800 tips)
5030062	ExpellPlus 20ul, Sterile w/filter, hinged racks	96	10 (960 tips)
5030062C	ExpellPlus 20ul, Sterile w/filter, hinged racks	96	50 (4800 tips)
5030066	ExpellPlus 100ul, Sterile w/filter, hinged racks	96	10 (960 tips)
5030066C	ExpellPlus 100ul, Sterile w/filter, hinged racks	96	50 (4800 tips)
5030090	ExpellPlus 200ul, Sterile w/filter, hinged racks	96	10 (960 tips)
5030090C	ExpellPlus 200ul, Sterile w/filter, hinged racks	96	50 (4800 tips)
5030080	ExpellPlus 200ul, Sterile, hinged racks	96	10 (960 tips)
5030080C	ExpellPlus 200ul, Sterile, hinged racks	96	50 (4800 tips)
5030095	ExpellPlus 200ul, ecoReload cards	96	10 (960 tips)
5030095C	ExpellPlus 200ul, ecoReload cards	96	100 (9600 tips)
5130110	Expell 300ul, Sterile, hinged racks	96	10 (960 tips)
5130110C	Expell 300ul, Sterile, hinged racks	96	50 (4800 tips)
5130150	Expell 1000ul, Sterile w/filter, hinged racks	60	8 (480 tips)
5130150C	Expell 1000ul, Sterile w/filter, hinged racks	60	40 (2400 tips)
5130140C	Expell 1000ul Sterile, hinged racks	60	16 (960 tips)
5130165C	Expell 5000ul, Sterile, hinged racks	50	10 (500 tips)

PIPETTES, TIPS AND ACCESSORIES

Pipette Tips

Tip Compatibility Guide

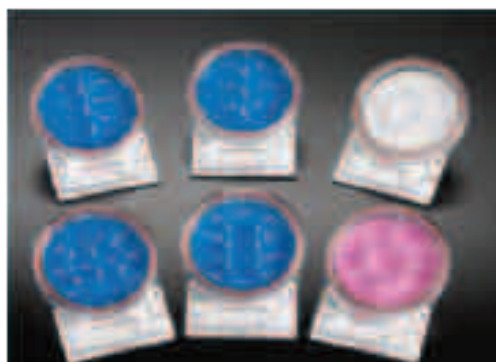
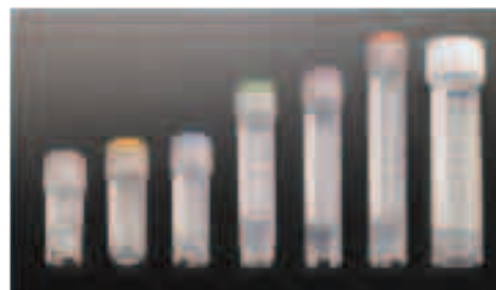
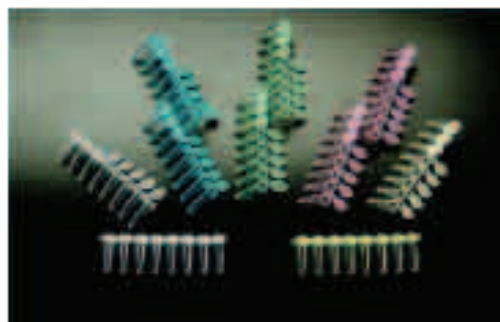
Brand of Pipette	Pipette	Filter Tips						Non-Filter Tips				
		10S	10L	20	100	200	1000	10S	10L	200	300	1000
BIOHIT	Biohit Electronic, 0.2-10ul			X				X	X			
	Biohit Electronic, 5-100ul				X	X				X	X	
	Biohit Proline 0.5-10ul	X	X					X	X			
	Biohit Proline 5-50ul				X	X				X	X	
	Biohit Proline 50-200ul					X				X	X	
	Biohit Proline 200-1000ul						X					X
BRAND	Brand Transferpette 0.1-10ul	X	X					X	X			
	Brand Transferpette 5-50ul				X	X				X	X	
	Brand Transferpette 50-100ul				X	X				X	X	
	Brand Transferpette 20-200ul					X				X	X	
	Brand Transferpette 100-1000ul						X					X
EPPENDORF	Research/Reference, 0.1-2.5ul		X					X	X			
	Research/Reference, 0.5-10ul	X	X					X	X			
	Research/Reference, 2-20ul			X						X		
	Research/Reference, 10-100ul				X	X				X	X	
	Research/Reference, 20-200ul					X					X	
Research/Reference, 100-1000ul						X					X	
FINNPIPETTE	Single Channel 0.2-10ul	X						X	X			
	Single Channel 0.5-20ul	X	X					X	X			
	Single Channel 5-40ul			X						X		
	Single Channel 40-200ul					X				X	X	
	Single Channel 100-1000ul						X					X
	Single Channel 200-1000ul						X					X
	Multi Channel, 5-50ul									X		
Multi Channel, 50-300ul										X		
GILSON	Pipetman P-2, 0.1-2ul	X	X					X	X			
	Pipetman P-10, 0.2-10ul	X	X					X	X			
	Pipetman P-20, 2-20ul			X						X		
	Pipetman P-100, 10-100ul									X	X	
	Pipetman P-200, 20-200ul					X				X	X	
	Pipetman P-1000, 100-1000ul						X					X
HAMILTON	Single Channel 0.2-2ul	X	X					X	X			
	Single Channel 1-10ul	X	X					X	X			
	Single Channel 2.5-25ul				X					X		
	Single Channel 10-100ul				X	X				X	X	
	Single Channel 30-300ul										X	
	Single Channel 100-1000ul						X					X
	Multi Channel 5-50ul									X		
Multi Channel 30-300ul										X		
RAININ	E-MIC-10, 0.5-10ul	X						X	X			
	E2-25, 2.5-25ul				X	X				X		
	E2-100, 10-100ul				X	X				X	X	
	E2-250, 25-250ul										X	
	E2-1000, 2-1000ul						X					X
	R2, 0.1-2ul	X	X					X	X			
	R10, 0.2-10ul	X	X	X				X	X			
	R20, 2-20ul			X						X		
	R100, 10-100ul				X	X				X	X	
	R200, 20-200ul				X	X				X	X	
R1000, 100-1000ul						X					X	
SOCOREX	Calibra 10-100ul				X	X				X	X	
	Calibra 20-200ul				X	X				X	X	
	Calibra 100-1000ul						X					X
	Digital 0.5-10ul		X					X	X			
	Digital 2-20ul			X						X		
	Digital 10-100ul				X	X				X	X	
	Digital 20-200ul					X				X	X	
	Digital 100-1000ul						X					X

LABORATORY PLASTICWARE

BioVentures offers line of innovative disposable plasticware that is designed to fill all of your unique laboratory needs. Due to the quantity and diversity of the plasticware, BioVentures has put a limited number of items in this catalog, however the full Laboratory Plasticware catalog may be downloaded from our website www.bioventures.com or you may call or email support@bioventures to place a special order or inquire about any items from the full Plasticware catalog. The minimum order for special orders is \$150, not including shipping.

The Full catalog includes items in the following areas:

- Analyser and Fibrin Cups,
- Beakers,
- Cell Spreaders,
- Cluster Tube System,
- Containers,
- Cryogenic Vials and Accessories,
- Deep Well Plates and Accessories,
- Disposable Funnels,
- Histology Disposables,
- Inoculating Loops & Needles,
- Microscope Slide Handling & Storage Products,
- Microtubes,
- PCR Disposables,
- Petri Dishes,
- Transfer Pipettes,
- Racks, Storages Boxes,
- Tube and Vial Accessories,
- Tubes,
- Closures and Vials.



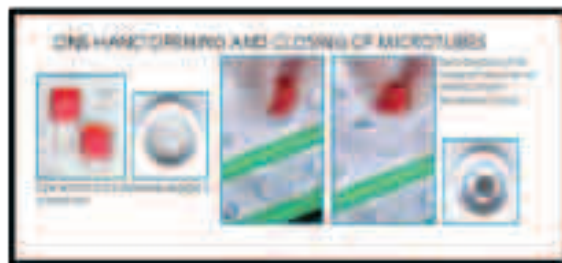
LABORATORY PLASTICWARE

Racks and Accessories

OneHand™ Microtube Rack

Although one of the most attractive racks available today, it offers all the advantages required by the modern laboratory. The rack is made of 2 tiers to facilitate the insertion and stability of microtubes. Now with one hand, you can easily unscrew just about any type of microcentrifuge tube with a screw-on closure. Thanks to an innovative locking system, the Simport self-standing Microwtubes® will securely lock in each well of the base tier and will not turn. Most models of microtubes made by various manufacturers will lock in the upper tier, thanks to a series of teeth grasping the collar of the microtube.

The OneHand™ Microtube Rack is compact, lightweight and stackable in order to save as much space as possible. This is why it is ideal for incubators, refrigerators, freezers, under lab hoods and on bench tops. Not only is it submersible but will also sink and maintain stability without tipping over. Made of highly resistant acetal polymer, it will not shatter or stain in contact with most laboratory chemicals. No coating to worry about, which can chip, peel or rust in a water bath. Convenient handles on each side of the rack will ensure a safe grip when carrying it around. Interlocking feet allow safe stacking. Individually wrapped. Size: 11 1/2 x 4 1/2 x 1 1/2 in.



Catalog Number	Description	Capacity	Color	Qty/Case
T360-50B-I	OneHand™ Microtube Rack	50 Tubes	Blue	1
T360-50G-I	OneHand™ Microtube Rack	50 Tubes	Green	1
T360-50L-I	OneHand™ Microtube Rack	50 Tubes	Lilac	1
T360-50O-I	OneHand™ Microtube Rack	50 Tubes	Orange	1
T360-50Y-I	OneHand™ Microtube Rack	50 Tubes	Yellow	1
T360-50B	OneHand™ Microtube Rack	50 Tubes	Blue	10
T360-50G	OneHand™ Microtube Rack	50 Tubes	Green	10
T360-50L	OneHand™ Microtube Rack	50 Tubes	Lilac	10
T360-50O	OneHand™ Microtube Rack	50 Tubes	Orange	10
T360-50Y	OneHand™ Microtube Rack	50 Tubes	Yellow	10
T361-50	OneHand™ Microtube Rack Cover		Clear	10

LABORATORY PLASTICWARE

Racks and Accessories

MultiRack™

A newly designed tube support that can be used all around the lab. The MultiRack™ is available in three models to accommodate a full range of laboratory test tubes and centrifuge tubes up to 30 mm in diameter. Although it is one of the most attractive racks available today, it offers all the advantages required by the modern laboratory. Made of highly resistant acetal polymer, it will not shatter or stain in contact with most laboratory chemicals. No coating to worry about, which can chip, peel or rust in a water bath.

The MultiRack™ is compact, lightweight and stackable in order to save as much space as possible. This is why it is ideal for incubators, refrigerators, freezers, under lab hoods and on bench tops. Not only is it submersible but will also sink and maintain stability without tipping over.



The MultiRack™ is made of three-tiers to facilitate the insertion and stability of tubes. The base tier has rounded wells with drain holes. Convenient handles on each side of the rack will ensure a safe grip when carrying it around. Interlocking feet allow stacking. Series S600-13 will accommodate all tubes up to a diameter of 13 mm while series S600-16 will accept tubes up to 16 mm in diameter including 15 ml centrifuge tubes. Model S600-30 is perfect for accommodating up to 18 x 50 ml centrifuge tubes. Made of acetal polymer.

Autoclavable at 121 °C for 20 minutes. Available in five colors. Dimensions: 11 1/2 x 4 1/2 x 2 1/2 in. H

Catalog #	Name	Description	Capacity	Color	Qty/Pk
S600-13B-I	MultiRack 13mm	Fits tubes up to 13mm	84	Blue	1
S600-13G-I	MultiRack 13mm	Fits tubes up to 13mm	84	Green	1
S600-13L-I	MultiRack 13mm	Fits tubes up to 13mm	84	Lilac	1
S600-13O-I	MultiRack 13mm	Fits tubes up to 13mm	84	Orange	1
S600-13Y-I	MultiRack 13mm	Fits tubes up to 13mm	84	Yellow	1
S600-16B-I	MultiRack 16mm	Fits tubes up to 15ml (16 mm)	60	Blue	1
S600-16G-I	MultiRack 16mm	Fits tubes up to 15ml (16 mm)	60	Green	1
S600-16L-I	MultiRack 16mm	Fits tubes up to 15ml (16 mm)	60	Lilac	1
S600-16O-I	MultiRack 16mm	Fits tubes up to 15ml (16 mm)	60	Orange	1
S600-16Y-I	MultiRack 16mm	Fits tubes up to 15ml (16 mm)	60	Yellow	1
S600-30B-I	MultiRack 30mm	Fits tubes up to 50ml (30 mm)	18	Blue	1
S600-30G-I	MultiRack 30mm	Fits tubes up to 50ml (30 mm)	18	Green	1
S600-30L-I	MultiRack 30mm	Fits tubes up to 50ml (30 mm)	18	Lilac	1
S600-30O-I	MultiRack 30mm	Fits tubes up to 50ml (30 mm)	18	Orange	1
S600-30Y-I	MultiRack 30mm	Fits tubes up to 50ml (30 mm)	18	Yellow	1

PCR Family of Plasticware

Tubes and Strip Tubes



T325-1 & 2



T325-3 & 4



T325-12



T320-2



T320-1 & T321-1

Amplitude™ T325 Series

0.2ml and 0.5ml thin walled reaction tubes that are made of transparent superior quality grade polypropylene for better content viewing and rapid thermal transfer. The attached hinged caps are either domed or pierceable flat topped and have an integral shield preventing contamination with surface of the lid. Autoclavable and packaged in tamper-proof resealable bags.

Amplitude™ T320 Series

0.2ml ultra thin walled reaction strips in 8 or 12 well format with non-attached lids. Ultra-thin side walls and bottoms yield uniform and efficient heat transfer for fast PCR and reactions. The strip tubes are standard well spacing and can be used with 8 and 12 multichannel pipettes.

Amplitude™ T320-2 & -3 Series

0.2ml ultra thin walled reaction strips with individually attached caps available with either the domed or pierceable flat lid design that ensure a perfect closure during heating and cooling cycles. Autoclavable and packaged in resealable bags.

Amplitude™ T321 Series

8 well and 12 well strip tube lids in either domed or flat cap design that ensure a perfect closure during heating and cooling cycles. The flat caps have a super clear, highly polished upper surface for real-time applications and fluorescent detection. Autoclavable and packaged in resealable bags.

Amplitude™ T322 Series

0.2ml PCR Reaction Strips with attached cap strip identical to the T320 series but these 0.2ml ultra thin walled reaction strips in 8 well format have already attached 8-cap strips molded with a living hinge to facilitate opening and closing. The cap design offers a snap shut seal to avoid evaporation during the thermal cycling process. Autoclavable and packaged in tamperproof resealable bags.

Catalog #	Description	Qty/ Case
T325-2N	0.2ml Flat Top Tubes, Snap Cap with contamination shield, natural	1000
T325-1N	0.2ml DomeTop Tubes, Snap Cap with contamination shield, natural	1000
T325-12N	0.2ml Tube Only, no lid, natural	1000
T325-4N	0.5ml Flat Top Tubes, Snap Cap, Natural	1000
T325-3N	0.5ml Dome Top Tubes, Snap Cap, Natural	1000
T320-2N	0.2ml Strip Tubes of 8, Individually Attached Flat Caps, natural	125
T320-1N	0.2ml Strip Tubes of 8, no lid, natural	125
T321-1N	Dome Strip Cap of 8	125
T321-2N	Flat Strip Cap of 8, optically clear	125
T320-10N	0.2ml Strip Tubes of 12, no lid, natural	125
T321-3N	Dome Cap Strip of 12, natural	125

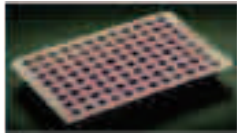
LABORATORY PLASTICWARE

PCR Family of Plasticware

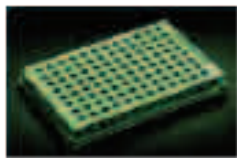
PCR Plates



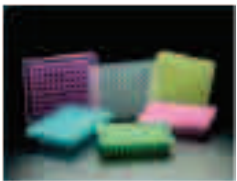
Amplate™ T323
0.2ml thin walled 96-well microplates designed for rapid thermal transfer. The inside of each well is smooth and has an inert surface to which enzymes and nucleic acids do not bind. The T329 series SecureSeal™ film and foil are compatible with these plates. Autoclavable.



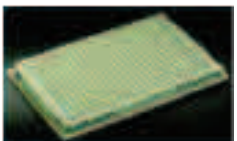
Amplate™ T323-96LP
Low profile thin walled microplate with standard 96 well spacing but each of the wells has a smaller volume (100ul) and therefore reduce the dead space between sample and cover. Sealing can be achieved with T321 Series domes and flat cap strips as well as T329 series SecureSeal™ film and foil. Autoclavable.



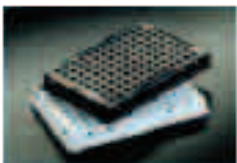
Amplate™ T323-96SK
96-well skirted microplate, similar to the T323 series but has a skirt around the plate providing a barcoding and labeling area as well as the ability for use with robotic handling equipment. Sealing can be achieved with T321 Series domes and flat cap strips as well as T329 series SecureSeal™ film and foil. Autoclavable.



Amplate™ T323-100
96 well raised rim (3mm) thin walled, non-skirted microplate. Sealing can be achieved with T321 Series domes and flat cap strips as well as T329 series SecureSeal™ film and foil. Autoclavable.



Amplate™ T323-101
96 well raised rim (3mm) thin walled microplate with a wide skirt that extends over and under the plate. Sealing can be achieved with T321 Series domes and flat cap strips as well as T329 series SecureSeal™ film and foil. Autoclavable.



Amplate™ T323-103
96 well raised rim (1mm) thin walled microplate with a wide skirt that extends over and under the plate. Sealing can be achieved with sealing mats, waxes or foils. Autoclavable.

Amplate™ T323-384SK
384 well thin walled, skirted microplates for high volume lab work. Each well has a 40ul capacity for use with reaction volumes of 2-30ul. Autoclavable and packaged in tamperproof resealable bags of 10 plates.

Amplate™ T324-96 & 384
Opaque, skirted microplates in 96 well or 384 well formats for chemiluminescent and fluorescent applications. Available in both black and white.

Catalog #	Description	Qty/Case
96-well Microplates		
T323-96N	AMPLATE™ 96- well plate, thin wall, PP, natural	100
T323-100N	AMPLATE™ 96-well plate with raised rim, thin wall, PP, natural	100
T323-101N	AMPLATE™ 96-well plate with 3mm raised rim, skirted, thin wall, PP, natural	100
T323-103N	AMPLATE™ 96-well plate with 1mm raised rim, skirted, thin wall, PP, natural	100
T323-96LPN	AMPLATE™ 96-well Low Profile (100ul max) plate, thin wall, natural	100
T323-96SKN	AMPLATE™ 96- well plate, bottom skirt, natural	100
384-well Microplates		
T323-384SKN	AMPLATE™ 384- well plate, skirted, thin wall, PP, natural	100
T324-96SKK	AMPLATE™ 96-well, skirted, opaque, black	100
T324-96SKW	AMPLATE™ 96-well, skirted, opaque, white	100
T324-384SKK	AMPLATE™ 384-well, skirted, opaque, black	100
T324-384SKW	AMPLATE™ 384-well, skirted, opaque, white	100

LABORATORY PLASTICWARE

PCR Family of Plasticware Thermal Cycler and Microplate Compatibility Guide

T323 Series of Microplates

Manufacturer	Thermal Cycler	Block Type	-48	-96	96LP	96SK	100	101	103	384
Applied Biosystems										
	GeneAmp® 9700	60 well								
	GeneAmp® 9700	96 well	X	X			X	X		
	GeneAmp® 9700	384 well								X
	9800 Fast Cycler	96 well			X					
	Verti™	60 well								
	Verti™	96 well	X	X						
	Verti™	384 well								X
	Verti™Fast Cycler	96 well			X					
	2720 Personal	96 well	X	X						
	GeneAmp®9600	96 well	X	X					X	
BioMetra										
	T1	96 well	X	X	X	X	X	X		
		384 well								X
	Tgradient	96 well	X	X	X	X	X			
		384 well								X
	Trobot	96 well	X	X	X	X	X	X		
		384 well								X
Bio-Rad										
	MJ Mini	48 well	X	X						
	MyCycler	96 well	X	X			X			
	iCycler	96well	X	X			X			
	DNA Engine	96 well	X	X			X			
Corbett (Qiagen)										
	PalmCycler™ 96	96 well	X	X						
	PalmCycler™ 384	384 well								X
Eppendorf										
	Mastercycler®	96 well	X	X	X	X	X			
	Mastercycler® ep	96 well	X	X	X	X	X			
	Mastercycler®	384 well								X
Stratagene (Agilent)										
	Gradient Cycler	96 well	X	X		X	X			
	RoboCycler	96 well	X	X		X	X			
Takara										
	Dice™ PCR Cycler	96 well	X	X						
Thermo Fisher										
	Hybaid Px2	96 well				X				

For information on compatibility of plates with any thermal cycler not listed above, contact support@bioventures.

LABORATORY PLASTICWARE

Micrewtube Family of Plasticware

The Micrewtube Family of tubes are ideal for freezer storage, boiling applications, centrifugation etc. and will fit in most standard microcentrifuge rotors. The tubes and screw caps are made with heavy wall construction are built to last. All Tubes and Caps are certified RNase, DNase and Pyrogen safe.

* Not all available tubes are listed in this catalog or on the website, please call for information and pricing on additional Micrewtube products.

T334 – Micrewtube® WITH O-RING SEAL SCREW CAP

This series of tubes is available either plain or with printed graduations and white marking area for sample identification. The caps do not have the attachment loops for users who prefer to remove the caps completely from the tubes when filling or sampling. These microcentrifuge tubes have all the other fine features stated in the general description. Perfect for cryogenic work. Non skirted tubes can be centrifuged up to 20,000g. Will withstand temperatures from -196 °C to +121 °C. Made of polypropylene



T341T - Micrewtube® Tubes Only

Available in plain or graduated configuration, the latter being provided with a white marking area for sample identification. Can be used at extreme temperatures from -196 °C to +121 °C. Made of polypropylene.



T340-OS - Colored Closures With O-Ring Seal

The cap is molded with a deep internal lip that fits snugly against the interior wall of the tube thus preventing the contents from coming in contact with the seal or threads, thereby reducing the chances of sample contamination. The cap's high profile facilitates manipulation especially in aseptic procedures. All tubes and closures are manufactured in a clean environment. Closures in natural color can be COLOR CODED by the use of T345 Series Colored Capinsert™ inserted on the top of the closure. This is accomplished without removing the cap.

T340OSL - Colored Closures with O-Ring Seal and Loop

The cap is molded with a deep internal lip that fits snugly against the interior wall of the tube thus preventing the contents from coming in contact with the seal or threads, thereby reducing the chances of sample contamination. The cap's high profile facilitates manipulation especially in aseptic procedures and can remain attached to the tube in order to eliminate mix-ups and contamination. Closures in natural color can be COLOR CODED by the use of T345 Series Colored Capinsert™ inserted on the top of the closure. This is accomplished without removing the cap.

T340-FT - Colored Closures With Flat Top

These closures have a flat top to accommodate automatic capping machines in packaging industries.



T345 - Capinsert™ for Color Coding

The Capinsert™ is used to color code a Micrewtube® and a multitude of other Simport products according to your specific needs. It is inserted on top of the closure and has a write-on frosted area for sample identification. Made of polypropylene.

LABORATORY PLASTICWARE

CryoVial Family of Plasticware

The Cryovial® Family is the most complete line of cryogenic vials available today. Designed for storing cells, blood, serum and other biological fluids at temperatures as low as -196 °C, these sturdy polypropylene vials offer a high level of chemical resistance. As described in the following pages, they are available in 3 different configurations and in 5 sizes from 1.2 ml to 5 ml. A large white marking area and printed graduations facilitate sample identification. Some models are free-standing while some others have only a round bottom. Self-standing vials have a locking base allowing opening and closing with only one hand while vials are used with the OneHand Cryovial Workstation.

T315 OneHand Cryovial Workstation Rack

This handy autoclavable rack can hold up to 50 cryogenic vials. Now with one hand, you can easily unscrew Cryovial Tubes. Thanks to an innovative universal locking system, the vials will securely lock in each well and will not turn. Each position is identified with an alphanumeric index. Strong handles make it easy and safe to carry and is supported by five anti-skid rubber feet. The rack is compact and stackable. Available in three colors. Size: 4 x 8 x 1 in high



Catalog#	Name	Tube Capacity	Color	Qty/Case
T315-2	OneHand Cryovial	50	Blue	4
T315-3	OneHand Cryovial	50	Red	4
T315-10	OneHand Cryovial	50	Lilac	4
T315-2-I	OneHand Cryovial	50	Blue	1
T315-3-I	OneHand Cryovial	50	Red	1
T315-10	OneHand Cryovial	50	Lilac	1

T313 Cane for CRYOVIAL Tubes

For Storage of up to five 1.2 or 2ml Simport Cyrovial tubes in liquid nitrogen containers such as Dewar flasks.

Catalog #	Name	Length	Qty/Case
T313	CryoVial Cane	11 5/16 in	48



T312 & T345 CAPINSERT for CRYOVIAL Tubes

Color coded inserts fit precisely into the cap of Cryovial lids.

Cat #	Color	Qty/Bag	Cat #	Color	Qty/Bag
T312-1	White	500	T345W	White	500
T312-2	Blue	500	T345B	Blue	500
T312-3	Red	500	T345R	Red	500
T312-4	Green	500	T345G	Green	500
T312-5	Yellow	500	T345Y	Yellow	500
T312-7	Assorted	500	T345AS	Assorted	500
T312-8	Tan	500	T345V	Violet	500
T312-9	Gray	500	T345GY	Gray	500
T312-10	Lilac	500	T345L	Lilac	500
T312-11	Orange	500	T345O	Orange	500
T312-13	Purple	500	T345P	Pink	500
T312-14	Pink	500			



LABORATORY PLASTICWARE

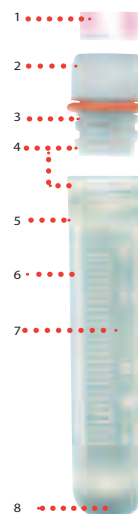
CryoVial Family of Plasticware

T301 Series
CRYOVIAL With Silicone O-ring Seal

Specially formulated polypropylene

Designed for safe storage at temperatures as low as $-196\text{ }^{\circ}\text{C}$ (but should be used only in the gas phase of liquid nitrogen). Only 1 1/4 turn of the cap is sufficient to screw the cap on the vial. The specially formulated silicone o-ring ensures a positive leakproof seal at all temperatures. Closure and vial are both made of polypropylene having the same coefficient of expansion, ensuring an equally secure seal both at room temperature and at low cryogenic temperatures. Tubes have a white marking area, can be color coded with a CAPINSERT (Series T312) and are compatible with most storage systems. Only the non skirted vials can be centrifuged, and up to 17,000g. Sterilized by gamma radiation and packaged in unique tamperproof, resealable, safety-lock bags of 100. Autoclavable.

- 1- A CAPINSERT™ is available in 11 different colors / Perfect for color coding (See T312 Series)
- 2- Vertical ribs facilitate cap removal
- 3- Super fast 1 and 1/4 turn thread design
- 4- Both cap and tube are made of same polypropylene material, therefore same coefficient of expansion ensures secure seal at all temperatures
- 5- Thick wall makes vial almost unbreakable
- 6- Large white marking area
- 7- Excellent clarity makes sample easy to see
- 8- Round bottom / Very easy to empty contents completely / Two sizes are self-standing with locking base



Feel the quality of your seal!

1

2

1. A positive leakproof seal is enhanced by a specially designed silicone o-ring around the cap

2. As you tighten it, you can feel the quality of your seal while you compress the o-ring between the tube wall and the cap, creating a tight closure



Catalog#	T301-1	T301-2	T301-3	T301-5
Volume (ml)	1.2	2	2	6
Size (mm)	12.5 x 41	12.5 x 49	12.5 x 48	12.5 x 90
Self-Standing	Yes	Yes		
Round Bottom			Yes	Yes
Qty/Case	1000	1000	1000	1000

LABORATORY PLASTICWARE

CryoVial Family of Plasticware

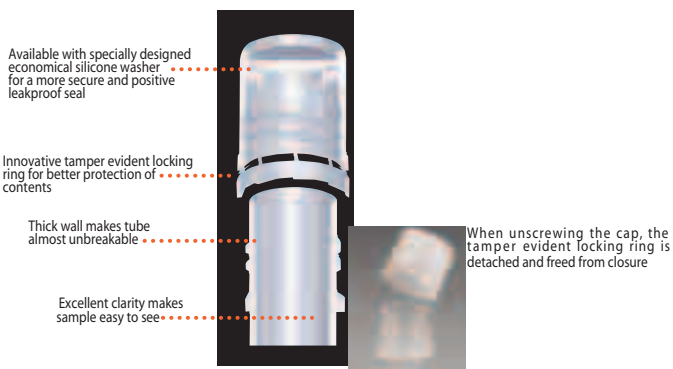
T310TP

Tamper Evident CRYOVIAL With Silicone Washer Seal

Tube made of polypropylene / Cap made of polyethylene

Recognizing the special needs of the laboratory scientist in the area of Cryogenics, Simport has developed a unique Cryovial, initiating the beginning of a new era in sample protection. The unique Simport CryoLock™ Tamper Evident Cryogenic Vial incorporates a seal that needs to be broken in order to open it, which leaves an obvious visual indication that the vial has been opened. The ease of operation is due in part to the closure's unique frangible band design. This produces a combination tamper-evident resistant closure system that provides benefits of safety and peace of mind.

Designed for storing biological material, human or animal cells, at temperatures as low as -196° C (but should be used only in the gas phase of liquid nitrogen). The cap features a long skirt for one hand aseptic methods, a super fast thread design that allows tightening or removal with a mere 1 1/4 turn, and an inside thread design that will not contribute to possible contamination. But this tamper evident cap also features an exclusive silicone seal as well as a specially designed lip fitted inside of the cap to ensure a positive seal at any temperature, even the lowest of cryogenic temperatures. Tubes are provided with a white marking area for sample identification and can be color coded by using a Capinsert™ (T345). The Simport CryoLock™ Tamper Evident Cryovial is compatible with most storage systems. Self-standing vials are sterilized by



Catalog#	T310-1ATP	T310-2ATP	T310-5ATP
Volume(ml)	1.2	2	5
Size(mm)	11.8 x 35.1	11.8 x 44.3	11.8 x 82
Self-Standing	Yes	Yes	Yes
Qty/Case	1000	1000	1000

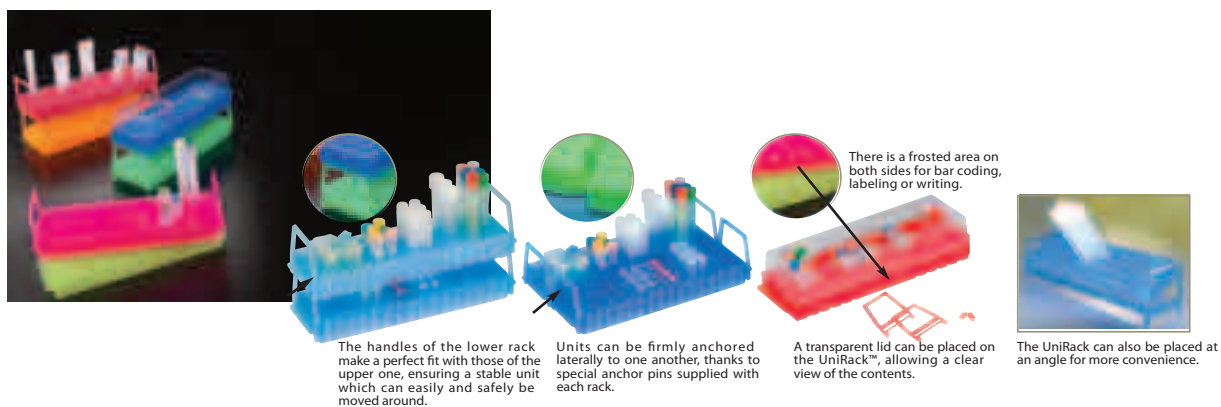
LABORATORY PLASTICWARE

CryoVial Family of Plasticware

The UniRack

Made of polypropylene The UniRack offers the laboratory a support far more versatile and easy to use than any other rack available today. It is designed to use minimum counter space while offering maximum flexibility. Made of autoclavable polypropylene, it allows great resistance to various chemicals used in laboratories. On one side it can hold up to 80 polystyrene or polypropylene 10 and 12 mm tubes, such as 10 x 75 mm or 12 x 75 mm sizes. This rack will accommodate all types of screw cap microtubes from 0.5 to 2ml made by manufacturers such as Simport, Sarstedt, Nalgene, Bio-Plas, SSI, Sorenson etc... as well as 1 to 5ml cryogenic vials. Flip the UniRack over and you can store up to 60 PCR or microcentrifuge tubes from 0.2 to 0.5ml. Units can be firmly anchored laterally to one another, thanks to special anchor pins supplied with each rack. This innovative concept will allow the user to store 80, 160, 240 and even 320 tubes of different shapes, sizes and volumes since the units can be attached to each other either on the 80- or 60- position side facing upward, thus ensuring maximum versatility. It is supplied with two removable handles allowing for better safety characteristics. The handles of the lower rack make a perfect fit with those of the upper one, ensuring a stable unit which can easily and safely be moved around. An additional protection level is possible by using a very resistant and quite affordable transparent lid allowing a clear view of the contents. More units can be added on top of each other with the lid in place thanks to small pins located on the cover. There is a frosted area on both sides for bar coding, labeling or writing, enabling the user to identify the contents. It is easy to write on it with a felt-tip pen. These areas are well labeled with arrows to clearly identify which side of the rack the information belongs to. Offered in a wide array of colors allowing the user to classify tubes by their content or by date, work shift, or destination or simply by laboratory.

Dimensions: 223 x 67 x 27 mm H (9 3/16 L x 2 5/8 W x 1 1/16in. H)



Catalog#	Name	Color	Qty
S500-80B-I	UniRack	Blue	1
S500-80B	UniRack - Case	Blue	10
S500-80G-I	UniRack	Green	1
S500-80G	UniRack- Case	Green	10
S500-80O-I	UniRack	Orange	1
S500-80O	UniRack - Case	Orange	10
S500-80P-I	UniRack	Pink	1
S500-80P	UniRack - Case	Pink	10
S500-80R-I	UniRack	Red	1
S500-80R	UniRack - Case	Red	10
S500-80Y-I	UniRack	Yellow	1
S500-80Y	UniRack - Case	Yellow	10
S500-80AS*	UniRack - Case	Assorted	10
	*Blue, green, orange, pink and yellow		
S501-80	UniRack Lid	Clear	10

CoreDish Family of Plasticware Multiple Biopsy Containers

Few recommendations concerning how the biopsies should be handled have been published. Performing a large number of biopsies means an increase in the number of containers handled and consequently a technical overload of the transmission network, which occurs without any financial counterpart. A new approach had to be developed in order to increase productivity. Thanks to the CoreDish™ it is no more necessary to use a multitude of individual containers, thereby reducing risks of confusion. The CoreDish™ is in the shape of a dish measuring only 15 x 95 mm and is half prefilled with 10% Neutral Buffered Formalin. The screw on lid incorporates an O-ring in order to make it leakproof and protect its contents. The CoreDish™ conforms to OSHA directives. An area for patient information is provided on the label. Each case contains 10 CoreDish™ containers.



M970-D5B2



M970-D8P



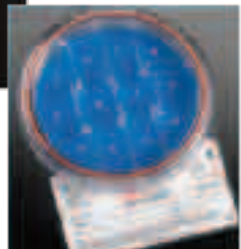
M970-D8UGI



M970-D12LGI



M970-D12P



M970-D12

M970-D5B-2

CoreDish™ BREAST BIOPSY CONTAINER WITH 10% FORMALIN

5-compartment container for breast biopsies (out of five compartments, four are labeled: LUQ, RUQ, LLQ, RLQ). Each compartment is clearly identified to allow proper placement and visualization of the breast biopsy being inserted. A writing area for patient information is provided.

M970-D8P

CoreDish™ PROSTATE BIOPSY CONTAINER WITH 10% FORMALIN

8-compartment container for prostate biopsies. Each compartment is clearly identified to allow proper placement and visualization of the prostate biopsy being inserted. Out of eight compartments, six are labeled: Base, Lateral Base, Medium, Lateral Medium, Apex, Lateral Apex.

M970-D8UGI

CoreDish™ UPPER GI TRACK BIOPSY CONTAINER WITH 10% FORMALIN

8-compartment container for upper GI track biopsies. Each compartment is clearly identified to allow proper placement and visualization of the prostate biopsy being inserted. Out of eight compartments, seven are labeled: Gastric Card, Gastric Body, GE Junction, Gastric ATR, Distal Esophage, Pylorus, Duodeum.

M970-D12LGI

CoreDish™ LOWER GI TRACK BIOPSY CONTAINER WITH 10% FORMALIN

12-compartment container for lower GI track biopsies. Each compartment is clearly identified to allow proper placement and visualization of the prostate biopsy being inserted. Out of twelve compartments, ten are labeled: Proximal Flexure Colon, Hepatic Flexure Colon, Distal Transverse Colon, Ascending Colon, Splenic flexure Colon, Cecum, Descending Colon, Terminal Ileum, Rectum, Sigmoid Colon.

M970-D12P

CoreDish™ PROSTATE BIOPSY CONTAINER WITH 10% FORMALIN

12-compartment container for prostate biopsies. Each compartment is clearly identified to allow proper placement and visualization of the prostate biopsy being inserted. All twelve compartments are labeled:

L Base, R Base, L Lateral Base, R Lateral Base, L Lateral Medium, R Lateral Medium, R Lateral Apex, L Lateral Apex, L Apex, R Apex, R Lateral Apex.

M970-D5

CoreDish™ 5-COMPARTMENT BIOPSY CONTAINER WITH 10% FORMALIN

Multi-compartment container for up to 5 biopsies. Compartments are numbered from 1 to 5.

M970-D8

CoreDish™ 8-COMPARTMENT BIOPSY CONTAINER WITH 10% FORMALIN

Multi-compartment container for up to 8 biopsies. Compartments are numbered from 1 to 8.

M970-D12

CoreDish™ 12-COMPARTMENT BIOPSY CONTAINER WITH 10% FORMALIN

Multi-compartment container for up to twelve biopsies. Compartments are numbered from 1 to 12.



Contact Information

BioVentures, Inc.
1435 Kensington Square Court
Murfreesboro, Tennessee 37130
Phone: 1-800-235-8938 / 615-896-7353
Fax: 615-896-4837
Email: support@bioventures.com
Website: www.bioventures.com

Product Ordering Information
Online: visit www.bioventures.com
Phone: 1-800-235-8938
Fax: 615-896-4837
Email: support@bioventures.com